

WELCOME TO 9TH GRADE ENGLISH!



--Ms. House



WHAT CAN YOU EXPECT FROM THIS CLASS?

- Reading a **wide range** of literary and nonfiction selections as a class and on your own.
- **Responding** to literature **in writing** and **honing your communication skills** in the process.
- Applying what you read and learn to your own life and the world.
- Doing **homework**, though only when necessary.
- Reading **independently** at home and in class from books your choose (3 per semester).
- Demonstrating your ability to work effectively **on your own** and **in teams**.





PAUSE HERE AND THINK

Pause here while you **write down three burning questions** you have. Hopefully, I will have answered them by the end of this presentation. If not, we'll have a bit Q&A at the end of this slide show. :)



WHAT WILL YOU STUDY?

FALL SEMESTER

Short Story Unit: **How do authors effectively use literary elements to create and develop a meaningful short fiction text?**

Coming-of-Age Novel Unit: **What does it mean to grow up? How do our experiences shape who we become?**

Research/Adversity Unit: **How can we effectively produce evidence of research in academic writing?**

FALL SEMESTER CONTINUED...

Fall texts: **poems, stories and non-fiction selected sometimes by me, sometimes by you, plus selections from the MyPerspectives textbook which is available through your MyOsd Portal. Choices of novels for the Coming-of-Age unit: *The Glass Castle, Catcher In The Rye, The Highest Tide, To Kill A Mockingbird, Uglies, All The Light We Cannot See, The Secret Life of Bees, and Speak.***

SPRING SEMESTER

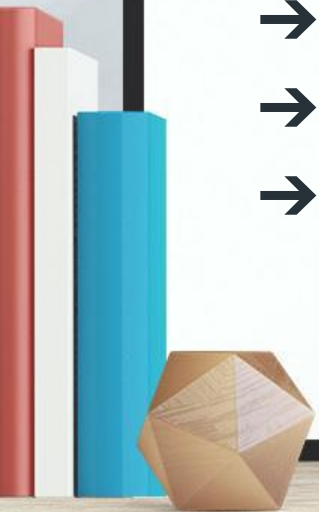
Essay Modes Unit: **In what ways does the audience and purpose of a text influence the format in which it is written? How do effective writers use language and structure to explain their ideas in a way that engages their audience?**

Quest Novel Unit: **Why are humans so compelled by the quest? What do we learn from these stories?**

Romeo and Juliet Unit: **What are the enduring questions and conflicts that writers (and their cultures) grappled with hundreds of years ago and are still relevant today?**

BEHAVIOR EXPECTATIONS

- Be present.
- Be prepared.
- Be curious.
- Be kind.



WHAT DOES THIS LOOK LIKE IN THE CLASSROOM?



SUPPLIES

Need	Would be useful	Donations appreciated if you can
<ul style="list-style-type: none">● Chromebook (charged)● Notebook or section ONLY for English● Pen/pencil, eraser● Your book/materials● Place to organize handouts/papers (binder? Pee-chee?)	<ul style="list-style-type: none">● Highlighters● Sticky notes● Colored pencils/markers● Chromebook compatible headphones/adapter (for audiobooks, audio/video activities, etc.)	<ul style="list-style-type: none">● Tissues!● Hand sanitizer● Books● Craft supplies (markers, construction paper, paints, colored pencils, etc.)● Old magazines



CELL POLICY



Your personal phone is a distraction to your learning. We both know it.

No personal cell phones from bell to bell.
Academic use of a phone with permission. Folks who can't self-manage will put their phones in the phone pocket organizer for the period

CELL POLICY CONTINUED...



To what extent are phones a distraction to learning? To what extent are they useful?

What are some ways we can manage phone use so that we can be successful?

CHS IS AN IB SCHOOL!



WHAT DO YOU NEED TO KNOW ABOUT MY GRADING POLICY?

We use a Standards Based Grading system, meaning your work is evaluated on the degree to which it meets [9th grade learning standards](#).

Performance category, 75%: Assignments and assessments that demonstrate your development/mastery of learning standards (mostly end-of-unit papers, projects). Reflections that demonstrate your takeaways and understanding of your learning.

Engaged Learning, 25%: Day-to-day participation, completion, professionalism, and engagement with course materials and activities. Includes things like note-taking, on-time homework, discussion prep/participation, evidence of reading, journal completion, etc.

GRADING: WHAT IS WEIRD ABOUT THIS SCALE?

<i>Grade</i>	<i>Definition</i>	<i>Percentage in Skyward</i>
4	Advanced - consistently exceeds proficient level of standard(s).	A = 92.5 – 100%
3.5	Proficient with partial success at advanced level.	A- = 86.67 – 92.49%
		B+ = 80.84 – 86.66%
3	Proficient - Consistently meets standard(s).	B = 75.0 – 80.83%
2.5	Basic but partial success at proficient level	B- = 66.67 – 74.99%
		C+ = 58.34 – 66.66%
2	Basic - Inconsistently meets standard(s).	C = 50.0 – 58.33%
1.5	Below basic but partial success at basic.	C- = 41.67 – 49.99%
		D+ = 33.34 – 41.66%
1	Below basic - Rarely meets standard(s).	D = 25 – 33.33%
0	The work does not reach a level identified by the descriptors above.	F = 0 – 24.99%
*	An asterisk on the Skyward report means that students have not yet been assessed in this area or is in the process of being assessed, but not yet entered – it is not a missing assignment.	

MISSED WORK/LATE WORK?

	Excused Absence	Unexcused absence or late missing assignments
Engaged Learning 25%	<ul style="list-style-type: none">• ✓ Can make up in reasonable time frame (usually # of days absent)• 100 Full credit• 👁️ See me or email for help	<ul style="list-style-type: none">• ✗ Cannot make up/turn in late, unless your IEP/504 specifies you get more time• 👁️ See me or email if you believe you should be able to make up due to extenuating circumstances

MISSED WORK/LATE WORK CONTINUED...

	Excused Absence	Unexcused absence or late missing assignments
Performance 75%	<ul style="list-style-type: none">• ✓ Can make up by end-of-unit deadline (two weeks after unit assessment is due)• <u>100</u> Full credit	<ul style="list-style-type: none">• ✓ Can make up by end-of-unit deadline (two weeks after unit assessment is due)• <u>100</u> Full credit

Work that is turned in on time in the performance category may be redone for a higher grade anytime before the friday before finals!

GROUP WORK

If you are absent on the day of a schedule presentation and it is a group presentation, **your group will be expected to present without you.** Consequently, all group work is required to be shared and not held by one person in the group. If you are absent on the day of an individual or group presentation, the presentation must be made up before or after school during regular office hours and arranged in advance. The time allowed for making up presentations follows school policy: one day for each day missed. Additionally, **if you are absent for more than 40% of the group work time, you may be asked to complete the project/work on your own.**

CHEATING/PLAGIARISM

Plagiarism and Cheating: All incidences of plagiarism **will be reported to administration and counselors.** Plagiarism includes both intentional and unintentional actions. Academic honesty is an important value in education and one that will help develop positive characteristics for your future. You may earn a zero on the assignment and lose the opportunity to redo. Each case is considered for the individual circumstances, but there is always a consequence.



WHAT KINDS OF THINGS CONSTITUTE CHEATING/PLAGIARISM?



SCHOOLGY/COMMUNICATION

my.osd111.org

Log in to this portal with your student gmail. From here you can access Schoology, Skyward, the MyPerspectives textbook for this class, and a whole bunch of other fun technology resources.

Log in and check your school email regularly.

I strongly encourage you to become advocates for your own education. When you have questions, don't understand an assignment or grade, or have concerns, I want you to come to me directly, at the right time and in the right manner.

Parents--they may need your support with when to meet and how to ask questions. :)

SCHOOLGY/COMMUNICATION

Consider all your communications with me as practice for the adult/professional world and part of this course in effective use of language to inform, persuade, or entertain.

I love it when you email me. But I also love it when you take the time to compose a professional email with all the information I need to help you. Here is a link to a wiki on [how to email your teachers](#) if you don't know what I mean.

My email: eshine@osd.wednet.edu (old) Eventually, I will have a new one: ehouse@osd.wednet.edu. Both will still work. I will let you know when the new address is active.

Course updates, deadlines, and information will all be on Schoology. I will also sometimes use Remind.

SCHOOLY/COMMUNICATION

Parent Remind: Text @d639b7 to 81010

Student Remind: Text @be6bfb to 81010

NoRedInk.com: good pen 7



WHAT ARE THREE SMART GOALS YOU HAVE FOR THE YEAR?

Think about them. I will ask for them as part of your homework tonight. :)

Specific

Measurable

Attainable

Relevant

Time-bound

ASSIGNMENT:

Go home and show your parents this slideshow. You and your parents sign the half sheet of paper I just passed out to you and return to me by _____. This will be your first score in the gradebook.

